

# Results of the 2004 Survey of Engineering Graduate Students

Engineering Graduate Student Council  
(EGSC)

February 7, 2005

# Student Affairs Committee

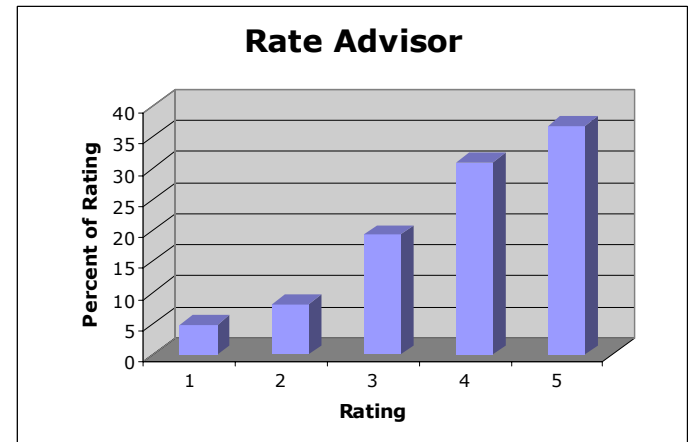
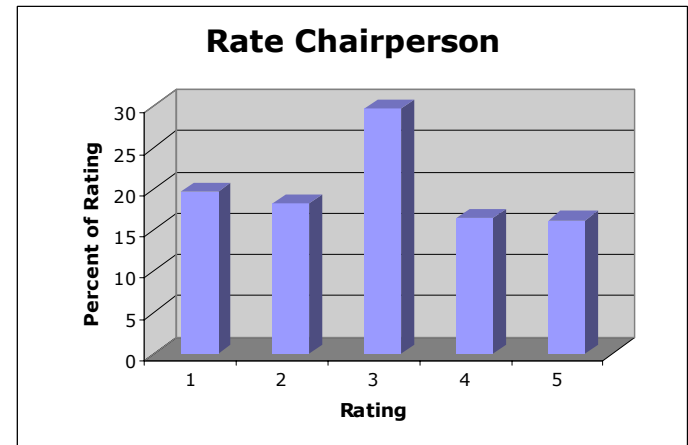
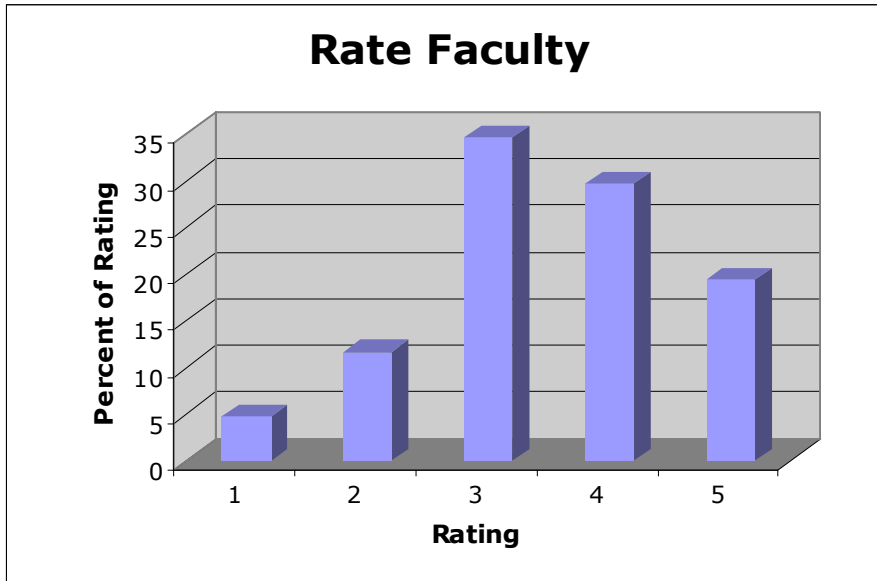
- Amr Gado-Mechanical
- Sankalita Saha-Electrical & Computer
- Suneel Sheikh-Aerospace
- Brooke Shrader-Electrical & Computer
- Abby Vogel-Biological Resources

# 2004 Survey

- Web-based
- Conducted Dec 1-8, 2004
- Responses: 369 (17.5% of grad engineering students)
- Engineering-wide results presented here
- Thanks to Bari Mitchell in IT

# Department Chairs, Faculty, and Advisors

Rate relationship with each on a scale of 1 (lowest) to 5 (highest)



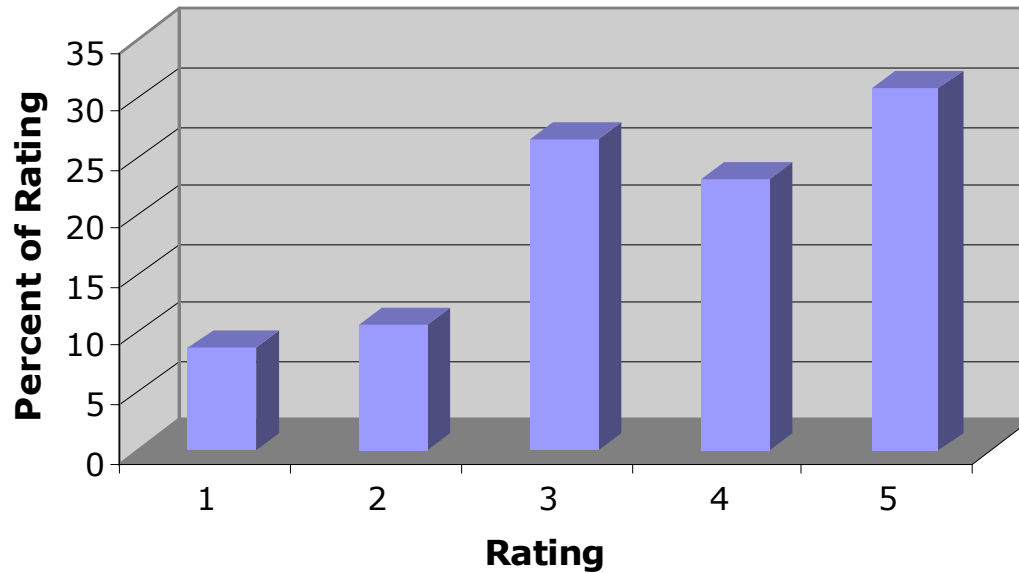
**Averages: Faculty = 3.47, Chairperson = 2.91, Advisor = 3.87**

Student Comments:

- Many faculty, because of a large research group, are not able to pay enough attention to individual students.
- The rules and regulations to switch advisors should be more transparent.

# Computing facilities

**Rate Computer**



*Average: 3.57*

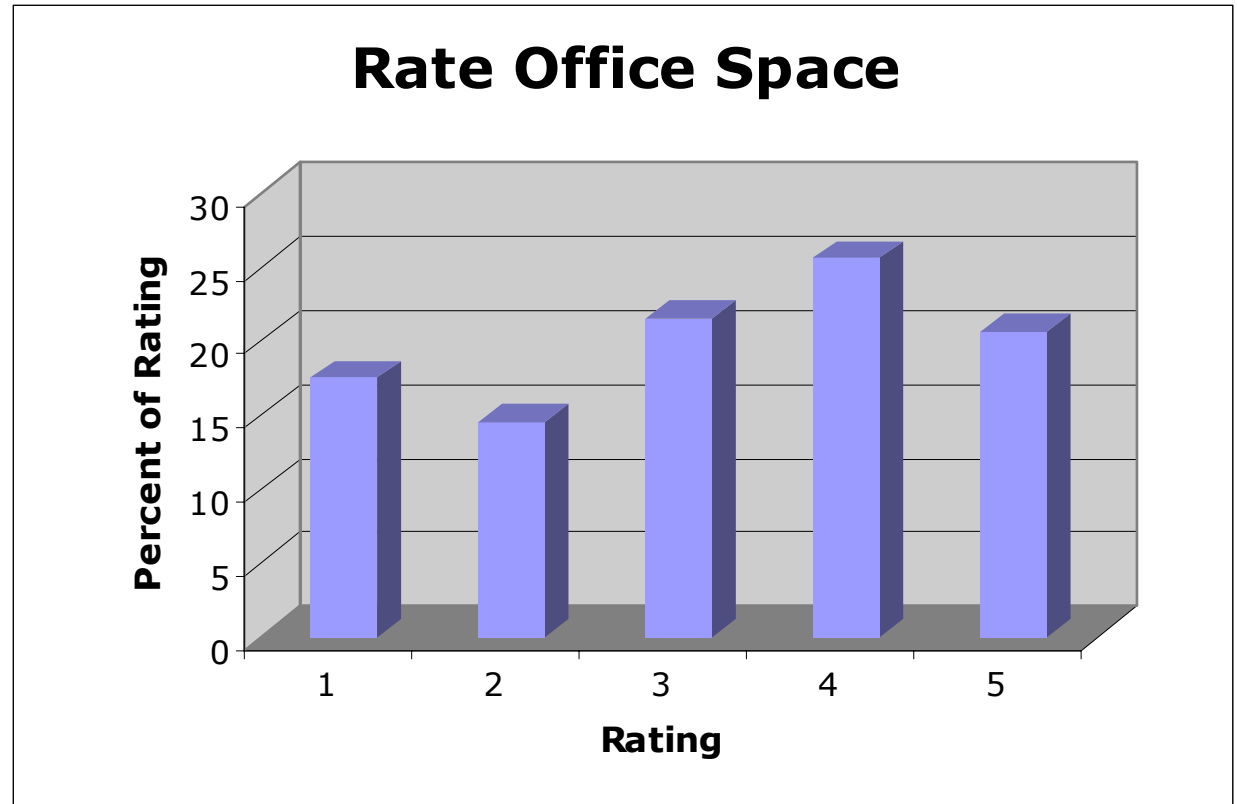
*High Scores: Mechanical, Aerospace*

*Low Scores: Civil & Environmental, Systems*

# Office Space

Student comments:  
•Complaints about heating/cooling  
•TAs don't have proper office space and computers.

**Average: 3.18**



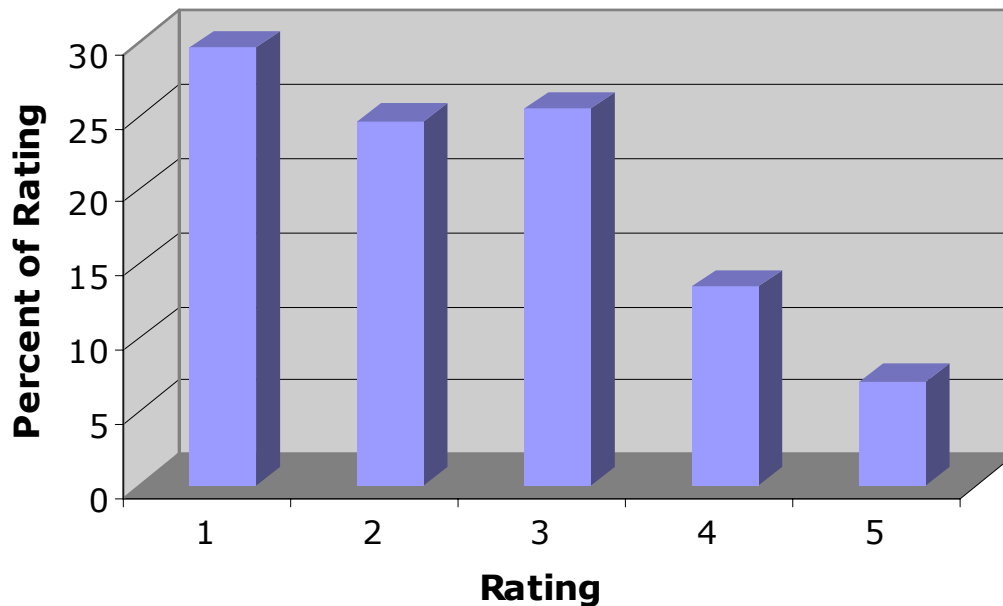
**High Scores: Bioengineering, Biological Resources, Aerospace**

**Low Scores: ECE, Systems, ENPM**

# Interaction

With students from other departments

**Rate Level of Interaction**






**Average: 2.43**

Student comments:  
There should be more interaction amongst students in a department.  
Student organizations such as EGSC should be given more encouragement.

**High Scores: Fire Protection, Chemical**

**Low Scores: Biological Resources, Bioengineering, ENPM**

# Students Want Help With

	Housing issues	30%
	Computer access	21%
	Office/lab space	35%
	Lab equipment/resources	24%
	Industry Careers	66%
	Academic Careers	50%
	Department/Advisor problems	30%

# Other student comments...

- Office space for students in programs like ENPM
- Alternative ID Number (distance-learning program) as use of SSN may lead to problems like identity theft
- More well defined rules for vacation for students on assistantship.

# Student Assistantships

- 64% of respondents find it difficult to live off their graduate assistantship salary.
- 50% of respondents would prefer the assistantship salary to be paid at the same rate throughout the year.
- Complaints about  $\frac{1}{2}$  TAs or  $\frac{1}{2}$  RAs. They end up doing the same amount of work as full TAs or RAs but at a lower pay.

# Graduate Student's Monthly Budget and Salary

Item	Budget Range	
	Low	High
Rent (per bedroom)	500	1100
Food	200	400
Clothes	50	100
Phone	30	60
Medical Insurance	40	120
Dr./Dentist/Medications	10	30
Books & Supplies	20	70
University fees	50	110
Furniture & Equipment	50	100
Car/Transportation	150	400
Parking	0	20
Airfare	0	100
Miscellaneous	100	200
<b>TOTAL</b>	<b>1200</b>	<b>2810</b>

- Assumes single student
  - “Low” lives near school
  - “High” lives further from school

- FY 05 Salaries (Step I GA)
  - 9 Months GA: \$1475/mo (\$17700/yr)
  - 12 Months GA: \$1844/mo (\$22128/yr)
- After Taxes (30%)
  - 9 Months GA: \$1033/mo (\$12396/yr)
  - 12 Months GA: \$1291/mo (\$15492/yr)
- Issues
  - 9 months GA can not pay monthly budget
    - Loans, additional jobs, savings, etc. needed to pay extra
    - Try to “catch up” with extra pay in summer if hired
- Washington DC high cost of living area
- Housing, Medical Insurance, & Fees increase each year

# Monthly Budget Justification

- Rent:** Common range for apartments/homes near campus or inside Beltway  
(\$500 for typical one-bedroom, utilities included: <http://www.och.umd.edu/>)  
(\$1100 for one-bedroom at Seven Springs Apartments:  
[http://www.apartmentguide.com/Property/property.asp?wsv\\_qsGeoKey=1,21,127&wsv\\_psPropertyID=10347](http://www.apartmentguide.com/Property/property.asp?wsv_qsGeoKey=1,21,127&wsv_psPropertyID=10347))
- Food:** Average cost from simple poll among graduate students. Low: \$7/day. High: \$14/day.
- Clothes:** Average cost from simple poll among graduate students
- Phone:** ATT Long Distance plan (\$30/mo: [http://www.consumer.att.com/plans/long\\_distance/](http://www.consumer.att.com/plans/long_distance/))  
Verizon Cell Phone plan (\$55/mo: <http://www.verizonwireless.com>)
- Med. Ins.:** State of Maryland plan  
(\$40/mo single medical plan only)  
(\$120/mo single medical, prescription, & dental)
- Dr. Visits:** Co-pay (one or more Dr./Dentist visits per month, plus any prescriptions)
- Books:** Single text can cost \$50-\$100
- Univ. Fees:** \$268–\$438.5 Mandatory Fees +\$21 Technology Fee per semester  
Other fees extra
- Equip.:** Laptop computer, extra software, chair, desk, etc.
- Car/Trans.:** \$7 roundtrip/day Metro fare  
\$800–\$1000 Car insurance/yr (perhaps car payment also)
- Parking:** \$166/yr Commuter parking, \$310/yr On-Campus Student parking
- Air Fare:** Assume one \$1200 ticket/yr (or two \$600 tickets/yr) maximum

# Presentation to the Dean and Departments

On February 7, 2005 the Engineering Graduate Student Council presented these results to the Dean of Engineering and the Engineering Department Chairs.

We made recommendations based on these results and continue to work towards improving conditions for graduate students.